

CERTIFICATE OF CONSTANCY OF PERFORMANCE

N° 2822-UKCA-CPR-0016

In compliance with Regulation 2020 N°1359 of The construction Products (EU exit) Regulation 2020, it was established that the construction product:

Product **Smoke Control Damper**

Reference of the product **MARKAGE MB**

Placed on the market by or for **RF TECHNOLOGIES**
Lange Ambachtstraat 40
9860 Oosterzele
Belgium

and produced in the manufacturing plant located in **Belgium**

is submitted by the manufacturer to a factory production control, and that the approved certification body EFACTIS UK/Ireland, has performed the initial type-testing for the relevant characteristics of the product, the initial inspection of the factory and of the factory production control and performs the continuous surveillance, assessment and approval of factory production control.

This certificate attests that all provisions concerning the assessment and verification of constancy of performance and the performance, described in Annex ZA of the standard **BS EN 12101-8:2011** under system 1 are applied, and that the product(s) fulfill(s) all the prescribed requirements set out above.

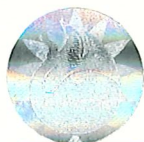
This certificate, first issued on **September 23rd 2022**, remains valid as long as the test methods and/or factory production control requirements included in the harmonised standard, used to assess the performance of the declared characteristics, do not change, and the product and the manufacturing conditions in the plant are not modified significantly.

This certificate allows the manufacturer, its mandatories or its distributors, stated in the United Kingdom Economic Area, to affix the UKCA marking.

Certificate established at Belfast on: **23/09/2022**

By the Technical Certification Director,

Daniel Joyeux
Technical Certification Director



Approved body
Nr 2822

**ANNEX TO THE CERTIFICATE OF CONSTANCY OF PERFORMANCE
TO THE STANDARD EN 12101-8:2011**

Product **Smoke Control Damper**

Reference of the product **MARKAGE MB**

Certificate delivered to **RF TECHNOLOGIES
Lange Ambachtstraat 40
9860 Oosterzele
Belgium**

Description of the field covered by the certificate:

CLASSIFICATION

In accordance with the classification report issued by Efectis France no EFR-21-001637 RC Revision 1.

Smoke control damper (with or without grids) with maximum dimensions 1000 x 1600 mm, installed into a duct made of PROMATECT LS, AD or L500

E	I	t	V _{edw}	H _{odw}	i	↔	o	S	Operating Pressure	HOT 400/30	C _{yy}	AA/MA	Multi
E	I	90	V _{ed}	h _{od}	i	↔	o	S	-1500 Pa to 500 Pa	HOT 400/30	C ₃₀₀	MA	Multi
E	I	90	V _{ed}	h _{od}	i	↔	o	S	-1500 Pa to 500 Pa	HOT 400/30	C ₁₀₀₀₀	MA	Multi

Smoke control damper (with or without grids) with maximum dimensions 1200 x 2400 mm, installed into a duct made of PROMATECT LS, AD or L500

E	I	t	V _{edw}	h _{odw}	i	↔	o	S	Operating pressure	HOT 400/30	C _{yy}	AA/MA	multi
E	I	60	V _{ed}	h _{od}	i	↔	o	S	-1000 Pa to +500 Pa	-	C ₃₀₀	MA	multi
E	I	60	V _{ed}	h _{od}	i	↔	o	S	-1000 Pa to +500 Pa	-	C ₁₀₀₀₀	MA	multi

Smoke control damper (with grids only) with maximum dimensions 1000 x 1600 mm, installed into a duct made of PROMATECT LS, AD or L500

E	I	t	V _{edw}	H _{odw}	i	↔	o	S	Operating Pressure	HOT 400/30	C _{yy}	AA/MA	Multi
E	I	120	V _{ed}	h _{od}	i	↔	o	S	-1500 Pa to 500 Pa	HOT 400/30	C ₃₀₀	MA	Multi
E	I	120	V _{ed}	h _{od}	i	↔	o	S	-1500 Pa to 500 Pa	HOT 400/30	C ₁₀₀₀₀	MA	Multi



Approved body
Nr 2822

Smoke control damper (with grids only) with maximum dimensions 1200 x 2400 mm, installed into a duct made of PROMATECT LS, AD or L500

E	I	t	V _{edw}	h _{odw}	i	↔	o	S	Operating pressure	HOT 400/30	C _{yy}	AA/MA	multi
E	I	120	V _{ed}	h _{od}	i	↔	o	S	-1000 Pa to +500 Pa	-	C ₃₀₀	MA	multi
E	I	120	V _{ed}	h _{od}	i	↔	o	S	-1000 Pa to +500 Pa	-	C ₁₀₀₀₀	MA	multi

Smoke control damper (with or without grids) with maximum dimensions 1000 x 1600 mm, installed into a concrete wall - thickness ≥ 100 mm and density ≥ 550 kg/m³ with mortar system or WEICHSHOTT system or 1S dry installation

E	I	t	V _{edw}	H _{odw}	i	↔	o	S	Operating Pressure	HOT 400/30	C _{yy}	AA/MA	Multi
E	I	90	V _{ew}	-	i	↔	o	S	-1500 Pa to +500 Pa	HOT 400/30	C ₃₀₀	MA	Multi
E	I	90	V _{ew}	-	i	↔	o	S	-1500 Pa to +500 Pa	HOT 400/30	C ₁₀₀₀₀	MA	Multi

Smoke control damper (with or without grids) with maximum dimensions 1000 x 1600 mm, installed into a concrete wall - thickness ≥ 100 mm and density ≥ 550 kg/m³ - 1S dry installation

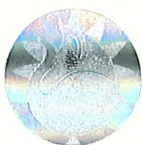
E	I	t	V _{edw}	H _{odw}	i	↔	o	S	Operating Pressure	HOT 400/30	C _{yy}	AA/MA	Multi
E	I	120	V _{ew}	-	i	↔	o	S	-1500 Pa to +500 Pa	HOT 400/30	C ₃₀₀	MA	Multi
E	I	120	V _{ew}	-	i	↔	o	S	-1500 Pa to +500 Pa	HOT 400/30	C ₁₀₀₀₀	MA	Multi

Smoke control damper (with or without grids) with maximum dimensions 1000 x 1600 mm, installed into a concrete slab - thickness ≥ 100 mm and density ≥ 550 kg/m³ with mortar system or WEICHSHOTT system

E	I	t	V _{ed} _w	H _{odw}	i	↔	o	S	Operating Pressure	HOT 400/30	C _{yy}	AA/MA	Multi
E	I	120	-	H _{ow}	i	↔	o	S	-1500 Pa to 500 Pa	HOT 400/30	C ₃₀₀	MA	Multi
E	I	120	-	h _{ow}	i	↔	o	S	-1500 Pa to 500 Pa	HOT 400/30	C ₁₀₀₀₀	MA	Multi

Description of the range:

Dimensions: 200 x 200 mm to 1000 x 1600 mm under nominal pressure
-1500 Pa to -500 Pa
Blade axis: Horizontal or Vertical
Number of blades: 1 to 8
Housing: PROMATECT MT
Blades: PROMATECT MT – 640 kg/m³
Actuating mechanisms: BEN, BEE or BE (BELIMO) 24 or 230 V
Communications Module: BELIMO/BV CONTROL BKNE, SMT/RFT IXI R1, AGNOSYS BRM-10-S, BUSTEC EURO ICC RBFU 2.01 ST OR RFT ZENIX 1SDST



Approved body
Nr 2822

APPROVED ACCESSORIES

- Protective grill in galvanised steel
- Galvanised steel duct connection frame
- 1S kit

Certificate established at Belfast on: **23/09/2022**

By the Technical Certification Director,



Daniel Joyeux
Technical Certification Director



Approved body
Nr 2822